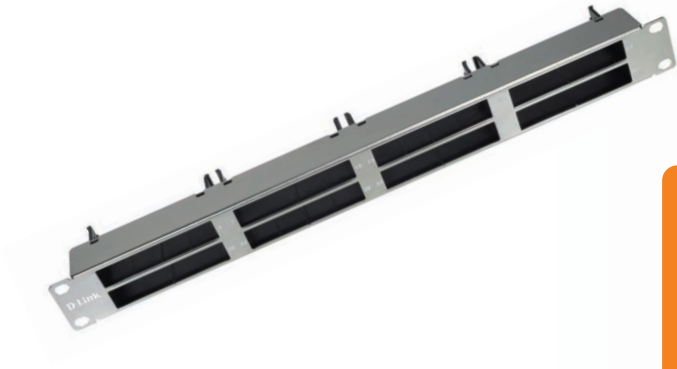


PRE-TERMINATED BLACK PATCH PANEL



KEY FEATURES

- Choice of module capacity
- Accepts Copper & Fibre Modules
- Snap-in Type

The Pre-terminated Black Patch Panel accepts both copper and fibre modules. The ability to have fibre and copper presented in one panel offers flexibility in the installation, reduces the rack space required and provides future proofing in system design.

SPECIFICATIONS

Suitable for number of outlets / modules:	48 Port per 1U
Category:	Cat.6 or Cat.6A Cassette
Number of Rack Units (RU):	1
Colour:	Silver
Mounting Method:	19 inch mounting
Height:	44.4 mm
Width:	482 mm
Depth:	73 mm

ORDERING INFORMATION

PART CODE	DESCRIPTION
DSC-PPFTUN3SV81	1U 48 Port Pre-termination ready Blank Patch Panel